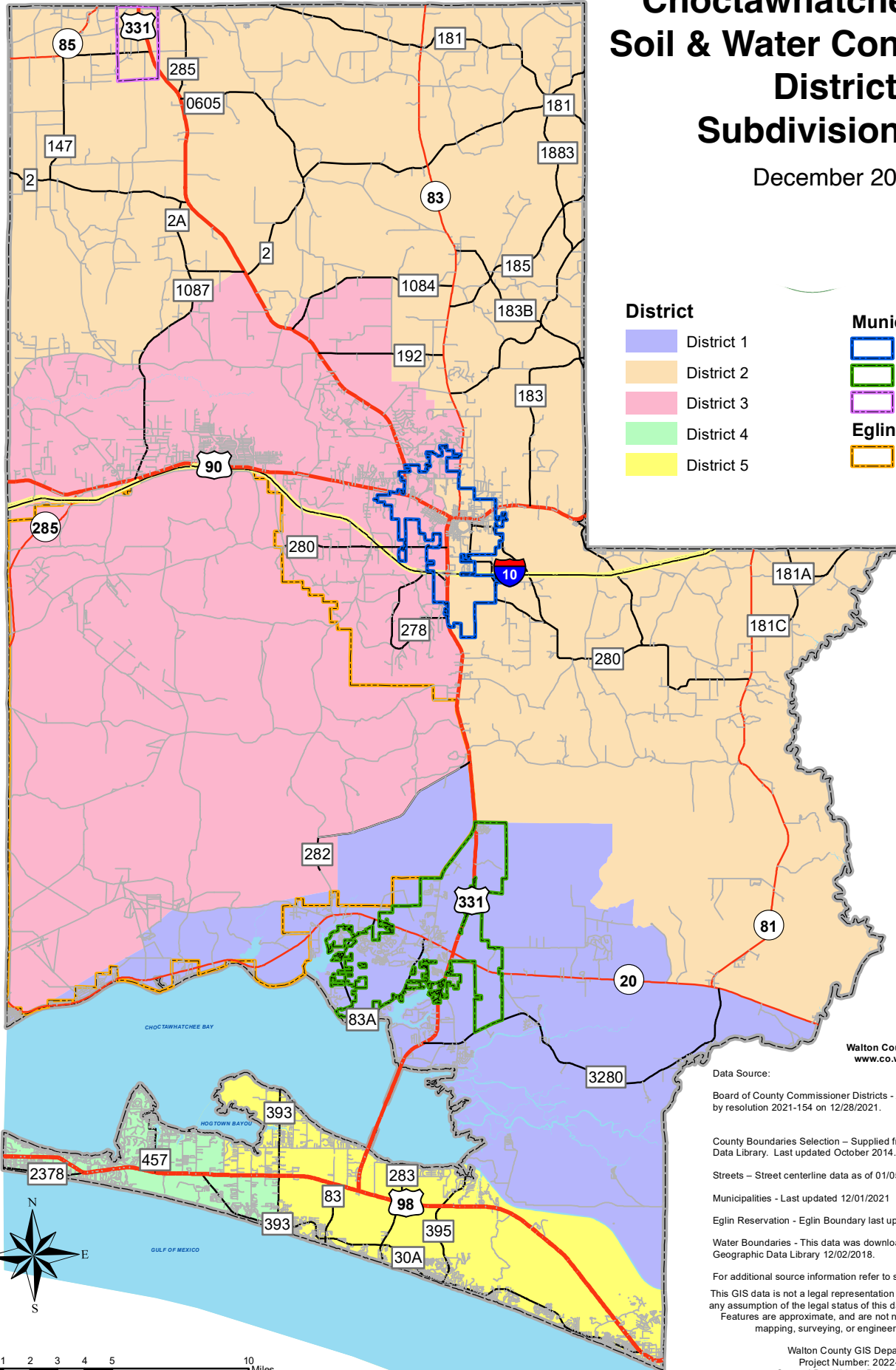


# Choctawhatchee River Soil & Water Conservation District Subdivision Map

December 2022



### District

- District 1
- District 2
- District 3
- District 4
- District 5

### Municipalities

- DeFuniak Springs
- Freeport
- Paxton

### Eglin Reservation

- Eglin Reservation

Walton County Website  
[www.co.walton.fl.us](http://www.co.walton.fl.us)

#### Data Source:

Board of County Commissioner Districts - Adopted by Walton BCC by resolution 2021-154 on 12/28/2021.

County Boundaries Selection - Supplied from the Florida Geographic Data Library. Last updated October 2014.

Streets - Street centerline data as of 01/05/2022.

Municipalities - Last updated 12/01/2021

Eglin Reservation - Eglin Boundary last updated 10/19/2006.

Water Boundaries - This data was downloaded from the Florida Geographic Data Library 12/02/2018.

For additional source information refer to source documentation.

This GIS data is not a legal representation of the features depicted; any assumption of the legal status of this data is hereby disclaimed. Features are approximate, and are not necessarily accurate to mapping, surveying, or engineering standards.

Walton County GIS Department  
Project Number: 2022-005  
Created By: KLL Date: 20220105