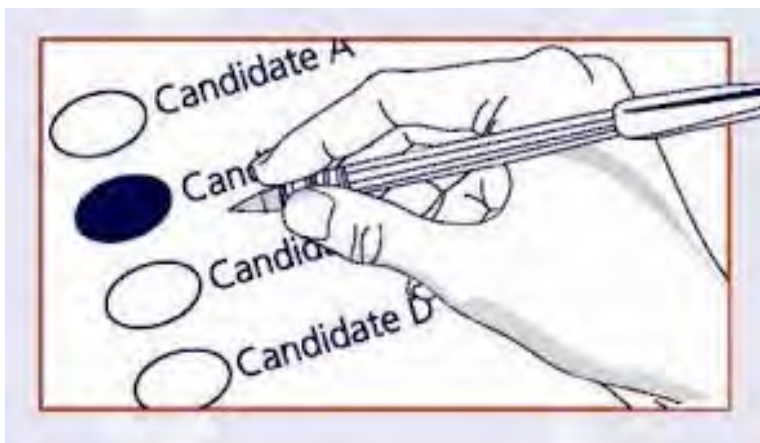


# How to Mark Your Paper Ballot

INSTRUCTIONS: TO VOTE, COMPLETELY FILL IN THE OVAL NEXT TO YOUR CHOICE.

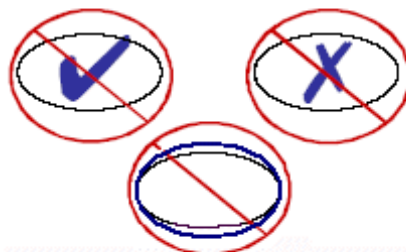
- Use only the marking device provided or a blue or black pen.
- If you make a mistake, do not hesitate to ask for a new ballot.
- If you erase or make other marks, your vote may not count



You must **completely fill in the oval** for your vote to count. Any other mark may not be read by the scanner.

- Do NOT use a check mark.
- Do NOT mark the oval with an X.
- Do NOT circle the oval

**INCORRECT**



## Write-In Votes

You must write in the name and fill in the oval next to the name, for the write-in vote to count. Also, the write-in candidate must be a **qualified** candidate.

Check with your precinct clerk for a list of qualified write-in candidates.

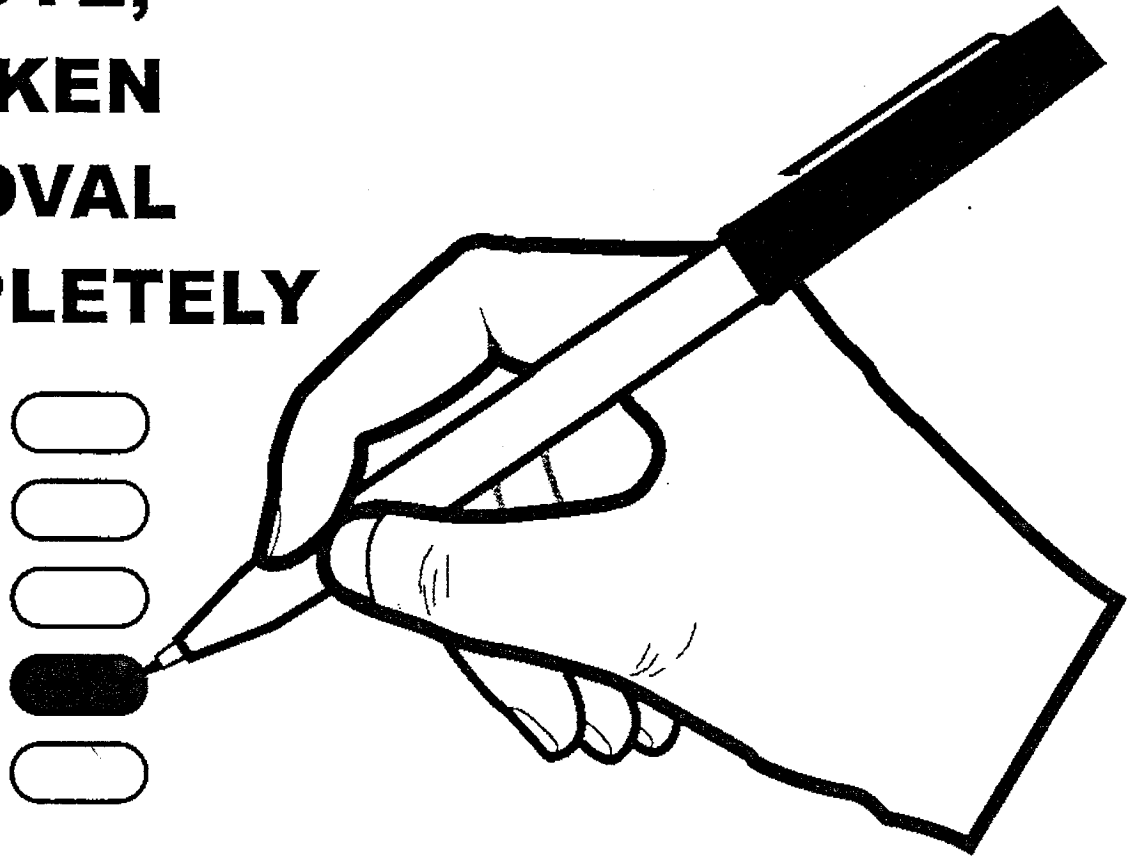
 **Thomas Jeffe**  
**Write-In**



# VOTING INSTRUCTIONS

---

**TO VOTE,  
BLACKEN  
THE OVAL  
COMPLETELY**



**DO NOT FOLD THE BALLOT**

**USE ONLY THE SPECIAL PEN PROVIDED**

---

IF YOU MAKE AN ERROR  
PLEASE RETURN YOUR BALLOT TO THE ELECTION OFFICIAL  
AND REQUEST A NEW BALLOT



**CHECK  
YOUR  
BALLOT**

**Be sure you have the correct ballot.  
IT IS YOUR RESPONSIBILITY**

**If you mark your ballot incorrectly**

**- or -**

**Feel you have the wrong ballot  
SEE THE CLERK IMMEDIATELY**

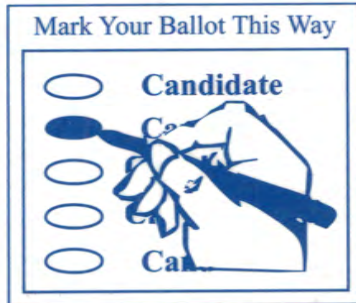
**(Once your ballot has been inserted into the tabulator, we cannot help you)**

**MARK YOUR BALLOT CORRECTLY -- COMPLETELY FILL IN THE OVAL NEXT TO YOUR CHOICE.**

**DO NOT WRITE IN A NAME THAT IS ALREADY PRINTED ON THE BALLOT**

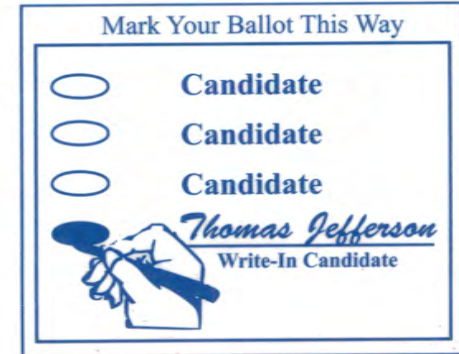
Select only one choice per race when "Vote for One" is indicated.

If a race is marked "Vote for Two" (or three or four), you may vote fewer than indicated and your vote *will* count (*Undervote*).



TO VOTE, COMPLETELY FILL IN THE OVAL NEXT TO YOUR CHOICE

To vote for a qualified write-in candidate, you must fill in the oval **and** write the name of the candidate on the line provided.



**VOTE BOTH SIDES - IF APPLICABLE**